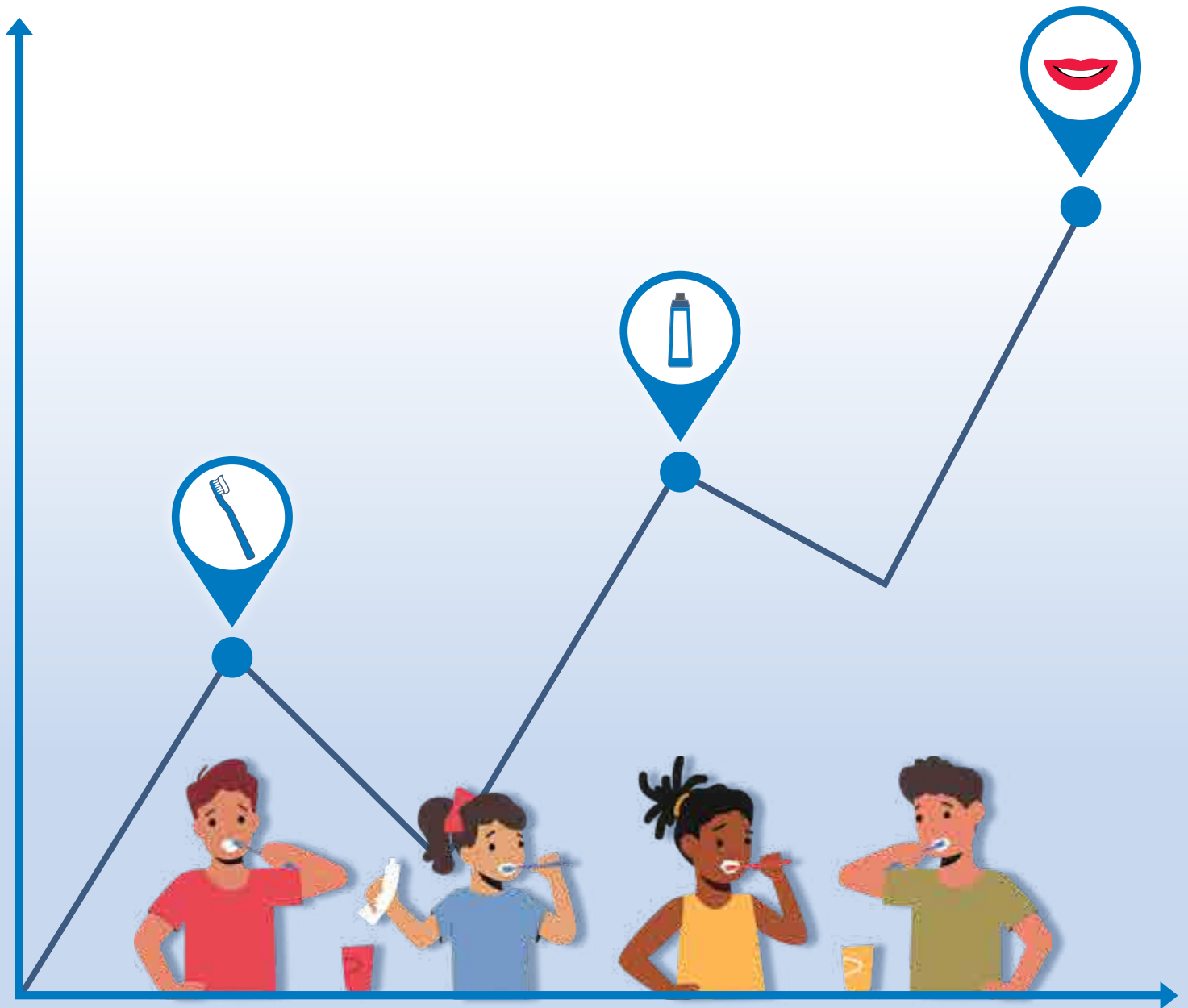


# ORAL HEALTH SUMMIT

## Turn the Curve on Oral Health PROGRAM GUIDE



June 21–22, 2023 | Hilton Arden West  
2200 Harvard St, Sacramento, CA 95815

# Day 1: Agenda

## Objectives:

1. Increase knowledge of statewide partners and project directors on focus areas of the State Oral Health Plan and available resources
2. Review prior 2-year workplan priorities and identify and plan new priorities and activities to implement them

## DAY 1: WEDNESDAY, JUNE 21, 2023

**Audience:** Local Oral Health Programs, Office of Oral Health, California Partnership for Oral Health, Steering Committee

8:00–10:00AM	<b>Arrival and Registration</b> (Atrium)
10:00–12:00PM	<b>Oral Health, Equity, and the Path Forward</b> (Ballroom) Introduction .....Lindsey McDermid Welcome .....Terri Sue Canale-Dalman (CDPH) Public Health Infrastructure Initiative ..... Dr. Tomás J. Aragón Advancing Health Equity .....Dr. Wilma Wooten Department of Health Care Services: New Opportunities for Improving Oral Health ..... René Mollow (DHCS) Medi-Cal Dental Program Updates ..... Adrianna Alcalá-Beshara (DHCS) Updates from the Dental Director .....Dr. Jayanth Kumar Disparities in Oral Health Initiatives (video) ..... Dr. Jennifer Webster-Cyriaque Questions & Answers
12:00–1:00PM	<b>Lunch</b> (provided, Atrium)
1:00–1:30PM	<b>Strategic Planning</b> (Ballroom) Prior Two-Year Action Plan .....Dr. Jayanth Kumar Next Two-Year Action Plan – Priorities.....Dr. Jayanth Kumar California Partnership for Oral Health Overview ..... Dr. Paul Glassman
1:30–3:10PM	<b>Working Session: State Two-Year Action Plan Priority Areas – Part 1</b> (Ballroom) 1. Expansion of FQHCs for Oral Health.....Amanda Carbajal 2. Medical/Dental Integration – Fluoride Varnish, Diabetes, Pregnancy.....Dr. Lynn Walton-Haynes 3. Decreasing Dental-related Emergency Room Visits..... Tooka Zokaie 4. Advancing Communication/Oral Health Literacy..... Dr. Kristin Hoeft
3:10–3:25PM	<b>Break</b>
3:25–4:40PM	<b>Working Session: State Two-Year Action Plan Priority Areas – Part 2</b> (Ballroom) 5. Leveraging the Community Health Worker Benefit for Oral Health ..... Eileen Espejo 6. Implementing Evidence-based School Dental Programs..... Paula Lee 7. Building Awareness about Community-based Dental Disease Prevention and Early Intervention Treatment Programs ..... Dr. Paul Glassman
4:40–5:00PM	<b>Key Take Aways and Wrap Up</b> (Ballroom) ..... Lindsey McDermid
5:00PM	<b>Adjourn</b>
5:00–6:00PM	<b>Reception</b> (Atrium)

# Day 2: Agenda

## DAY 2: THURSDAY, JUNE 22, 2023 (REGIONAL BREAKOUTS)

**Audience:** Local Oral Health Programs

Day 2 will provide opportunities for LOHPs to learn about, prioritize, and work together on critical topics in their Work Plans via four sessions: Creating and Sustaining Partnerships, Turn the Curve with KOHA, How to Plan for the Next School Year, and Co-Design of Regional Meetings.

- 7:00–8:15AM **Breakfast** (provided, Atrium)
- 8:30–8:45AM **Welcome and Purpose** (Ballroom)
- 8:45–9:00 AM **Regional Group Icebreaker**
- 9:00–10:15AM **Session 1: Creating and Sustaining Partnerships: Best Practices and Lessons Learned** (Ballroom)  
Presentation/Panel  
Small Group Discussion and Sharing
- 10:15–10:30AM **Break**
- 10:30–12:00PM **Session 2: Turn the Curve with KOHA** (Ballroom)  
Troubleshooting KOHA  
Quality Improvement and RBA  
Consensus Building
- 12:00–1:00PM **Box Lunch & Break** (Atrium)
- 1:00–2:00PM **Session 3: How to Plan for the Next School Year** (Ballroom)  
Context for 2023–2024 School Year  
Highlighting Steps from the School-Linked Program Manual  
Small Group Planning for a Successful 2023–2024 School Year
- 2:00–2:15PM **Break**
- 2:15–3:00PM **Session 4: Co-Design of Regional Meetings**  
Planning for Regional Meetings – Strengths, Challenges, Topics
- 3:00–3:30PM **Key Takeaways and Wrap Up**
- 3:30PM **Adjourn**

## DAY 2: THURSDAY, JUNE 22, 2023 (STEERING COMMITTEE MEETING)

**Audience:** Steering Committee Members

- 9:00–12:00PM **Steering Committee Meeting** (Shasta A and B)  
Agenda provided separately to Steering Committee Members.  
Boxed lunches available at the Atrium following the meeting.

Thank you for attending the Summit! The Office of Oral Health will send all participants a link via email to an evaluation survey. Your feedback is important to us and helps with future meeting topics.

\*Turn the Curve is a phrase popularized in the Results-Based Accountability framework and as described in “Trying Hard is Not Good Enough” — by Mark Friedman.

# Oral Health Summit Materials

Oral Health Summit materials, including speaker bios, worksheets, presentation slides, and other resources, can be found on the COHTAC website by scanning the QR code below.



## **Terri Sue Canale-Dalman**

*Deputy Director, Center for Healthy Communities, California Department of Public Health*

Terri Sue Canale-Dalman began her state career in 1992 at Mule Creek State Prison. Initially serving in the human resources field, she then transferred to the Department of Justice overseeing programs to regulate gambling. As the leader of the Office of Problem Gambling, she focused on providing statewide multi-cultural, multi-lingual prevention and treatment services for gambling disorder. The California Gambling Education and Treatment Services Program she developed and implemented is the largest and most comprehensive gambling disorder treatment program in the nation. Canale-Dalman has served on national boards, representing California as an expert in the field of preventing and treating gambling disorder.

In September 2022, Canale-Dalman became the Deputy Director for the Center for Healthy Communities, promoting an integrated whole-person health approach to prevention across the Center's 40+ programs. With more than 31 years of State Civil Service, Canale-Dalman has been recognized by the Attorney General for excellence and the Department of Public Health for leadership, as well as received a national award for problem gambling advocacy and a lifetime achievement award in the field of problem gambling.

## **Tomás J. Aragón, M.D., Dr. P.H.**

*Director and State Public Health Officer*

Dr. Tomás Aragón serves as the director of the California Department of Public Health and the State Public Health Officer, since January 4, 2021. Prior to coming to CDPH, he was the health officer for the City and County of San Francisco and director of the public health division.

Dr. Aragón has served in public health leadership roles for more than 20 years (communicable disease controller, deputy health officer, health officer, community health and chronic disease epidemiologist), including directing a public health emergency preparedness and response research and training center at the University of California, Berkeley School of Public Health.

As CDPH director, striving to embody and promote the universal values of dignity, equity, compassion and humility, he works through collaborative partnerships to mobilize communities and institutions to transform policies and systems towards a culture of equity, antiracism, healing and health for all people and our planet. As State Public Health Officer, he exercises leadership and legal authority to protect health and prevent disease.

Dr. Aragón graduated from University of California, Berkeley (B.A., Molecular Biology; Dr.P.H., Epidemiology), Harvard Medical School (M.D.), Harvard School of Public Health (M.P.H.), and Stanford University (certification in Strategic Decision and Risk Management in Healthcare). He completed his clinical and research training at University of California, San Francisco (San Francisco General Hospital Primary Care Internal Medicine; Clinical Infectious Diseases; and Traineeship in AIDS Prevention Studies).

# Day 1: Speaker Bios

## **Wilma J. Wooten, MD, MPH**

*Public Health Officer of Public Health Services Department, County of San Diego, Health and Human Services Agency*

Dr. Wooten received both professional degrees from the University of North Carolina, Chapel Hill, followed by the completion of residency training at the Georgetown/Providence Hospital Family Practice Residency Program in Washington, DC. In 1989, she completed the joint San Diego State University (SDSU), Graduate School of Public Health (GSPH)/University of California San Diego (UCSD) Preventive Medicine Residency, with an emphasis in Sports Medicine. Dr. Wooten practiced medicine as a faculty member in the UCSD Department of Family and Preventive Medicine from 1990 to 2001. She remains a UCSD volunteer Associate Clinical Professor and is an Adjunct Professor at SDSU/GSPH.

She has been with the County since 2001, initially serving as the Deputy Health Officer, from 2001-2007; then as the Director and Public Health Officer from 2007-2021; and now as the Public Health Officer since July 2021. She has a profound dedication to health disparities and health equity. This interest led to the development of a Health Equity Framework, in 2010, for local health departments to integrate equity into their organizations, which supports the principles of the national public health accreditation process.

Dr. Wooten is a member of the California Conference of Local Health Officers (CCLHO) and the Big Cities Health Coalition. She has served in the capacity as Chair for both organizations. She currently services as Chair of the Board of Directors for the national Public Health Accreditation Board. She is a past member of the Advisory Committee to the Director of the Centers for Disease Control and Prevention (CDC) (2015-2019). In 2020, Dr. Wooten was named by the San Diego Union Tribune as the 2020 San Diegan of the Year.

## **René Mollow, MSN, RN**

*Deputy Director, Department of Health Care Services, Health Care Benefits and Eligibility*

René Mollow has been with the Department of Health Care Services (DHCS) since 1995. She serves as the Deputy Director for Health Care Benefits and Eligibility (HCBE) in the Medi-Cal program. She provides leadership for benefit and eligibility policy planning, development, implementation, and evaluation of health care services and delivery systems under Medi-Cal and for the Children's Health Insurance Program (CHIP). HCBE is comprised of five divisions and one office: Benefits, Eligibility, Pharmacy Benefits, Primary and Rural Indian Health, Dental, and the Office of Family Planning.

Mollow works to ensure that policies, procedures, and related activities in HCBE conform to applicable state and federal policies, statutes, and regulations. She assists the Director, Administration, and State Legislature in determining program direction consistent with legislative intent and consults with the Director and State Medicaid Director on issues of significant policy impact involving both Medi-Cal and CHIP.

She has played a major role in policy planning, development, and implementation on matters pertaining to health care reform implementation and coverage expansions for children and young adults under Medi-Cal.

**Adrianna Alcalá-Beshara, JD, MBA**

*Division Chief, Medi-Cal Dental, DHCS*

**Jayanth Kumar, DDS, MPH**

*State Dental Director, Office of Oral Health, California Department of Public Health*

Dr. Jayanth Kumar was appointed as the California State Dental Director in August 2015. He is a board-certified specialist in dental public health and a former director and president of the American Board of Dental Public Health. Before joining the California Department of Public Health, he was state dental director in New York where he held multiple positions. His role as program director and manager has been defined by a strong commitment to elevating oral health as a priority in the state's health agenda.

**Jennifer Webster-Cyriaque, DDS, PhD**

*Deputy Director, National Institute of Dental and Craniofacial Research (NIDCR)*

Dr. Jennifer Webster-Cyriaque is the deputy director of National Institute of Dental and Craniofacial Research, National Institutes of Health. An accomplished clinician, researcher, and leader, Dr. Webster-Cyriaque had previously served as a faculty member at the University of North Carolina (UNC) schools of dentistry and medicine for more than two decades.

As a tenured full professor at UNC, Dr. Webster-Cyriaque also served as the attending on clinical service at the UNC Hospital's dental clinic. While there, she led research into a potential etiologic agent for salivary gland disease in patients living with HIV, assessed the oral microbiome and its implications for cancer-causing viruses, and studied the impact of the oral microbiome and oral health on HIV outcomes.

In addition to her research, Dr. Webster-Cyriaque has held leadership roles as the chair/vice chair of the Oral HIV/AIDS Research Alliance, as research director at the National Dental Association Foundation, as director of postdoctoral CTSA training, along with multiple roles within the American Association for Dental, Oral, and Craniofacial Research and the International Association for Dental Research. Since 2004, she has led the UNC Malawi project and provided assistance in founding Malawi's first dental school in 2019.

Dr. Webster-Cyriaque earned her Ph.D. in microbiology/immunology from the University of North Carolina-Chapel Hill in 1998, her D.D.S. from SUNY Buffalo in 1992, and her B.A. in biology and interdisciplinary social science from SUNY Buffalo in 1988.

## Strategic Planning Session

### **Paul Glassman, DDS, MA, MBA**

*Associate Dean for Research and Community Engagement at the College of Dental Medicine at California Northstate University (Elk Grove, CA), and Professor Emeritus at the University of the Pacific, Arthur A. Dugoni, School of Dentistry (San Francisco, CA)*

Dr. Paul Glassman has served on many national panels including the Institute of Medicine's (IOM) Committee on Oral Health Access to Services, which produced the IOM report on Improving Access to Oral Health Care for Vulnerable and Underserved Populations.

Dr. Glassman has had many years of dental practice experience treating patients with complex conditions and has published and lectured extensively in the areas of Hospital Dentistry, Dentistry for Patients with Special Needs, Dentistry for Individuals with Medical Disabilities, Dentistry for Patients with Dental Fear, Geriatric Dentistry, and Oral Health Systems reform. He has a long career working with special populations in a variety of practice and community settings. Dr. Glassman has been PI or Co-PI on over \$32 million in grants and contracts over the last 30 years devoted to community-service demonstration and research programs designed to improve oral health for people with disabilities and other underserved populations.

### **Amanda Carbajal, MPH**

*Associate Director of Health Center Operations, California Primary Care Association (CPCA)*

Amanda Carbajal joined CPCA in 2018 to lead the organization's program offering that strengthens community health center efforts to provide accessible, comprehensive oral health care. She also works to ensure community health centers are represented in both state and national strategies to expand oral health care. Carbajal holds a bachelor's degree in public health policy from UC Irvine, as well as a master's degree in public health from Drexel University. She is also a National Network for Oral Health Access Policy & Advocacy Committee Member.

### **Lynn Walton-Haynes, DDS, MPH**

*Dental Program Consultant, Office of Oral Health, California Department of Public Health*

Dr. Lynn Walton-Haynes is responsible for providing consultation on the development and implementation of dental policy, preventive programs, and performing quality assurance activities relating to dental programs. She leads the OOH medical-dental integration efforts focused on pregnant people and young children. She also serves as the OOH liaison for Diversity, Equity, and Inclusion.

Dr. Walton-Haynes completed her doctoral degree at the University of California, San Francisco, and a Master of Public Health degree in epidemiology from the University of California, Berkeley. Prior to her current role, she practiced dentistry for over 15 years and served more than 20 years as a public health epidemiologist at the state and county levels.



## **Tooka Zokaie, MPH, MAS, CPH**

*Certified Public Health Professional, Senior Health Policy Analyst for the California Dental Association*

Tooka Zokaie's work includes educating and collaborating with community leaders on public health topics, including community water fluoridation, school-based oral health, emergency department utilization for dental conditions, and dental care access. She is an academic research scientist and a Doctorate in Public Health Candidate at University of Illinois Chicago, School of Public Health. Her work integrates the importance of oral health when addressing total health questions. Zokaie's advocacy extends to the larger idea of "Health in All Policies" to empower intersectional leaders to make decisions with the lens of population health. She is a Section Councilor of the Oral Health Section and Governing Councilor of the Alcohol, Tobacco, and Other Drugs Section of the American Public Health Association.

## **Kristin Hoeft, PhD, MPH**

*Assistant Professor, Division of Oral Epidemiology and Dental Public Health, University of California, San Francisco (UCSF) School of Dentistry, Director, California Oral Health Technical Assistance Center (COHTAC)*

Dr. Kristin Hoeft has expertise in health education and evaluation, oral health literacy and qualitative research methods. Her research focuses on making optimal home oral hygiene and dental care experiences accessible to diverse and vulnerable populations and bringing best practices to community-based settings. She has worked in children's oral health disparities at UCSF's Center to Address Children's Oral Health (CAN DO) for over 15 years. She directs the California Oral Health Technical Assistance Center (COHTAC) and chairs the Communication & Oral Health Literacy Workgroup.

## **Eileen Espejo**

*Senior Managing Director, Health, Children Now*

Eileen Espejo spearheads Children Now's work to improve oral health outcomes for children in California. Previous projects include leading a pilot to strengthen medical-dental collaboration to increase dental utilization among children under 6 who are enrolled in Medi-Cal. She currently co-chairs the Steering Committee of the California Oral Health Partnership and advises state and county agencies about oral health activities such as the Department of Health Care Services transition of the Child, Health and Disability program and community oral health improvement plans.

# Day 1: Speaker Bios

## **Paula Lee, MPH, RDHAP**

### *Dental Hygienist Consultant, Office of Oral Health, California Department of Public Health*

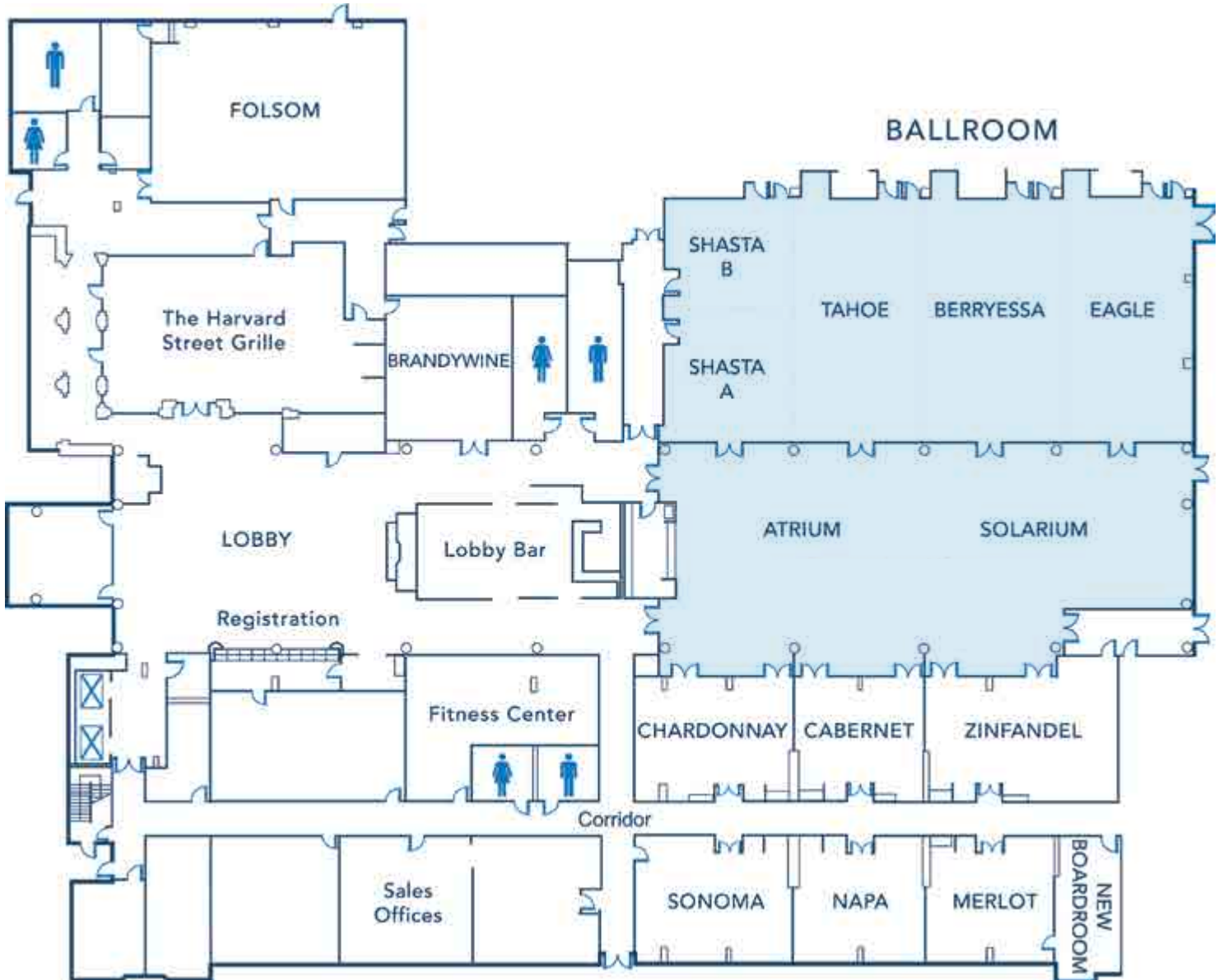
Paula Lee is the State coordinator for school-based/-linked dental programs. She also works on state and national quality improvement initiatives with medical, dental, and behavioral health integration. She is passionate about building public health infrastructure for the prevention of oral health diseases. Prior to working at the State, she spent more than 11 years working at a Federally Qualified Health Center and at a private dental practice. As a volunteer, Lee provided dental care services and oral health literacy in school-based/-linked dental programs to children, families, and community members in Nicaragua and Guatemala.

Lee received an MPH from UC Berkeley and a BA in business administration from Sacramento State University. She currently serves on the Government Relations Council for California Dental Hygiene Association as well as for the California Health Care Foundation Leadership Program, where health care leaders expand leadership skills and systems capacity to meet the challenges facing California's health care system.



# ORAL HEALTH SUMMIT

## Hilton Arden West Map



### BALLROOM

Tahoe, Berryessa and Eagle

### ATRIUM

Atrium and Solarium

### STEERING COMMITTEE

Shasta A and B