

MODOC COUNTY LOHP

Success Story (Integrating Medical- Dental Fluoride Varnish)

Savannah Wilson, Project Director/RDHAP

Objectives

THINGS TO TAKE AWAY

- Modoc County's Success
- Planning for a Successful Fluoride Varnish Training
- Engaging Medical Office Leadership Ideas
- Explore Offering CEUs
- Tips for Scheduling the Training
- Trainer Materials/PowerPoint- CHDP



Modoc County

WELCOME TO THE FRONTIER

Northeastern corner, with an extremely low density of residents.

- Over 3,900 square miles
- 8,600 residents
- Very rural and spread out!



Modoc County Barriers

- **Access to Care**
 - **Two Hospitals**
 - **5 Medical Clinics**
 - **Limited Amount of Providers**
 - **2 Dental Offices that accept medi-cal**
-

Why Fluoride Varnish? Medical Setting

DENTAL CARIES

- Is the most common chronic childhood disease, with disparities among underserved populations.
- More than half of California children have caries before reaching kindergarten (KOHA).

CHILDREN SEE MEDICAL PROVIDERS ON AVERAGE 9 TIMES BEFORE A DENTIST!

Fluoride varnish is a benefit of Medi-Cal (and other insurances) for children under 6 years old

FLUORIDE VARNISH

Is very low-cost and effective at preventing ECC. It only takes minutes to apply during well-child visits!

Medical- Dental Integration

ORAL HEALTH AND SYSTEMIC HEALTH

Let's start breaking the barrier for OVERALL health.....

CHDP Fluoride Varnish Training

INCLUDES

- Introduction Letter
 - Local CHDP FV Trainer Guide
 - FV Practicum Guide
 - CHDP Dental Training: FV
 - Training Evaluation
 - Provider Tools
 - A Medi-cal Provider's Guide
 - Steps to Implement FV in Your Medical Practice
 - FV Protocol and Standing Order
 - Periodicity Schedules
 - Folder Labels
 - Attendance Sheet
 - Certificate of Completion
-

Planning for a Successful Training

- Even though it is very easy to apply, one of the biggest challenges is having leadership engaged and committed.
- Identify who can make the decisions to implement FV.
- Meet with that person in advance to discuss implementation and encourage leadership to join the training.



Engaging Medical Office Leadership

EDUCATE

Explain the benefits of early prevention.
Show them local data, and discuss caries experience in Medi-cal populations.

WORKFLOW

Address concerns about workflow (suggestions in the CHDP training).

SUGGEST A PILOT

If they are hesitant to jump all in, suggest they start small. Such as one provider, or focus on a specific age.

Explore Offering CEUs

This is not necessary but beneficial if your county can offer them.

CALIFORNIA BOARD OF REGISTERED NURSING

It has a website that can help you learn how to be a provider that offers CEUs.

CALIFORNIA CERTIFYING BOARD OF MEDICAL ASSISTANTS OR AMERICAN ASSOCIATION OF MEDICAL ASSISTANTS

Make sure to have an agenda and a certificate of hours if planning on offering CEUs

Schedule the Training

INVITE ALL THE STAFF

- Medical providers, nursing staff, front desk, billing.
- Medical Assistants!! They can apply under standing order of physician.

SUPPLIES

- Projector
- Screen
- Laptop
- Internet Connection
- Training Folders

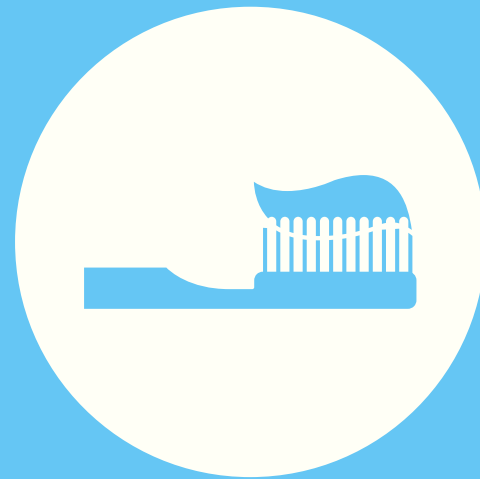
LOCATION

- Conference Room
- County Office
- Local Hospitals
- One office at a time or multiple?

CHDP PowerPoint

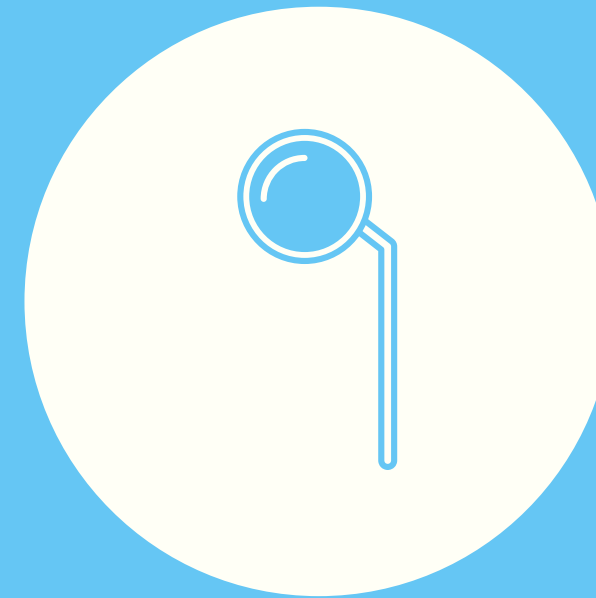


Download the PPT
onto a flash drive.
Have a PDF as
backup.



Bring trainer
materials.

- Labels
- Sign-in Sheet
- Evaluation
Forms
- Certificates of
Completion



All of this can be
found at:

**[https://www.dhcs.ca.gov/services/chdp/
Pages/FluorideVarnish.aspx](https://www.dhcs.ca.gov/services/chdp/Pages/FluorideVarnish.aspx)**



PRACTICUM

Sample FV
Hand Sanitizer
Gauze
Gloves



PRACTICE MATERIALS

- LOHP
- Local dentist, dental society or dental hygiene society
- Local First Five
- Dental Supply Companies
- Write a small grant
- Have incentives for participants

THANK YOU!

“To provide whole-person, integrated, patient-centered, comprehensive care, it is important to connect the mouth with the rest of the body”
-nam.edu/Perspectives

Most of my information today came from CHDP
Fluoride Varnish Training.

