



KOHA IN SAN DIEGO

Nancy Starr, R.D.H., M.P.H.

Christy Lopez, M.P.H., C.P.H.

January 20, 2022





POPULATION 3,316,073¹

- 5th largest county in the US
- Busiest land border in the world (San Ysidro)
- 42 school districts – 484 schools with Kindergarteners²
- 240,102 (49%) of K-12 students eligible for Free & Reduced Price Meals²
- 80,000 children ages 3-11 estimated to have never been to the dentist³



Sources: ¹U.S. Census Bureau, 2015-2019 American Community Survey 5-Year Estimates; ²California Department of Education, 2020-2021; ³2019-2020 California Health Interview Survey

WHERE WE STARTED



Prior to Prop 56 funding:

KOHA Data

Timeline established.

School-level KOHA data submitted to districts.

Districts submitted KOHA data to San Diego Office of Education (SDCOE).

MOA in place with SDCOE and County of San Diego.

Supports for Schools

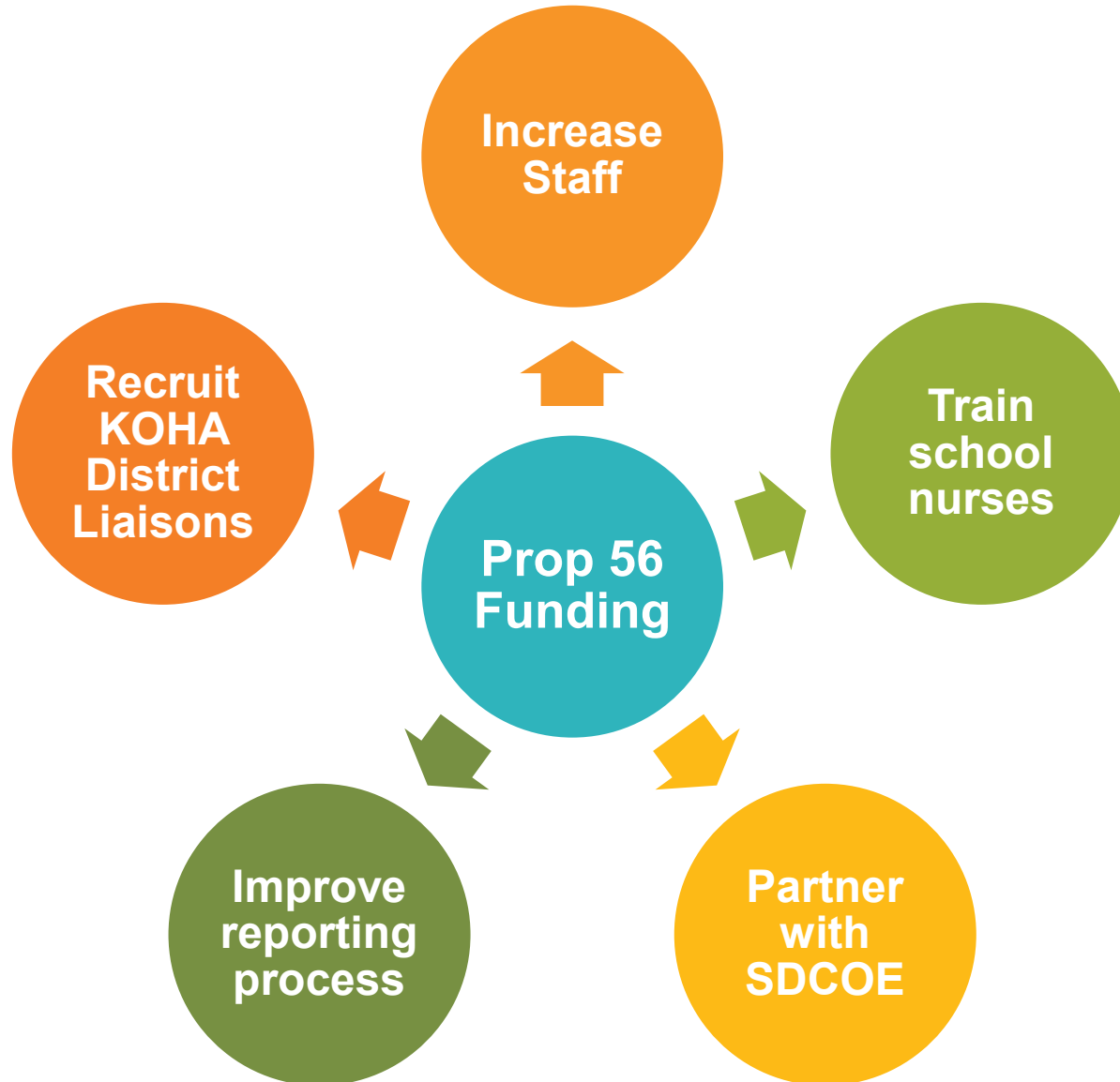
Annual trainings for new school nurses.

Resources

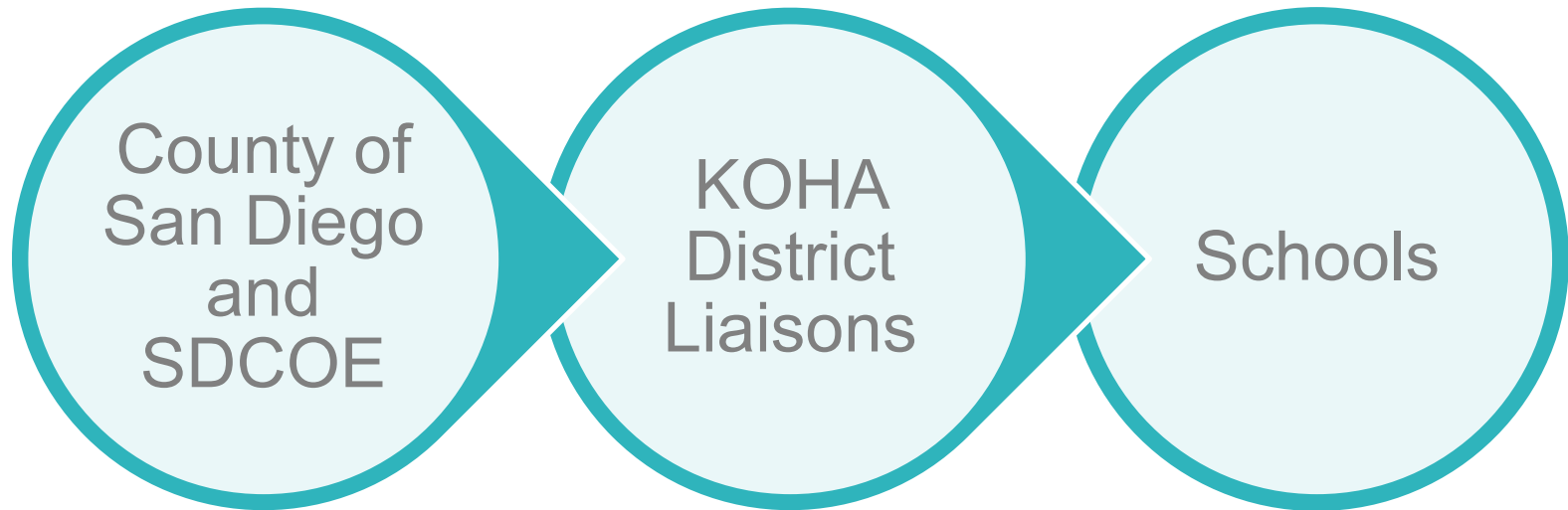
Website

- Request KOHA forms.
- Answer questions.

WHAT WE CHANGED



KOHA DISTRICT LIAISONS



- Share resources and information.
- Understand the KOHA process.
- Support school nurses to promote KOHA and collect forms.
- Help ensure accurate data is reported.
- Connect with County staff.

KOHA DISTRICT LIAISONS



Fall

- State and local oral health updates
- Promote KOHA forms as part of school registration

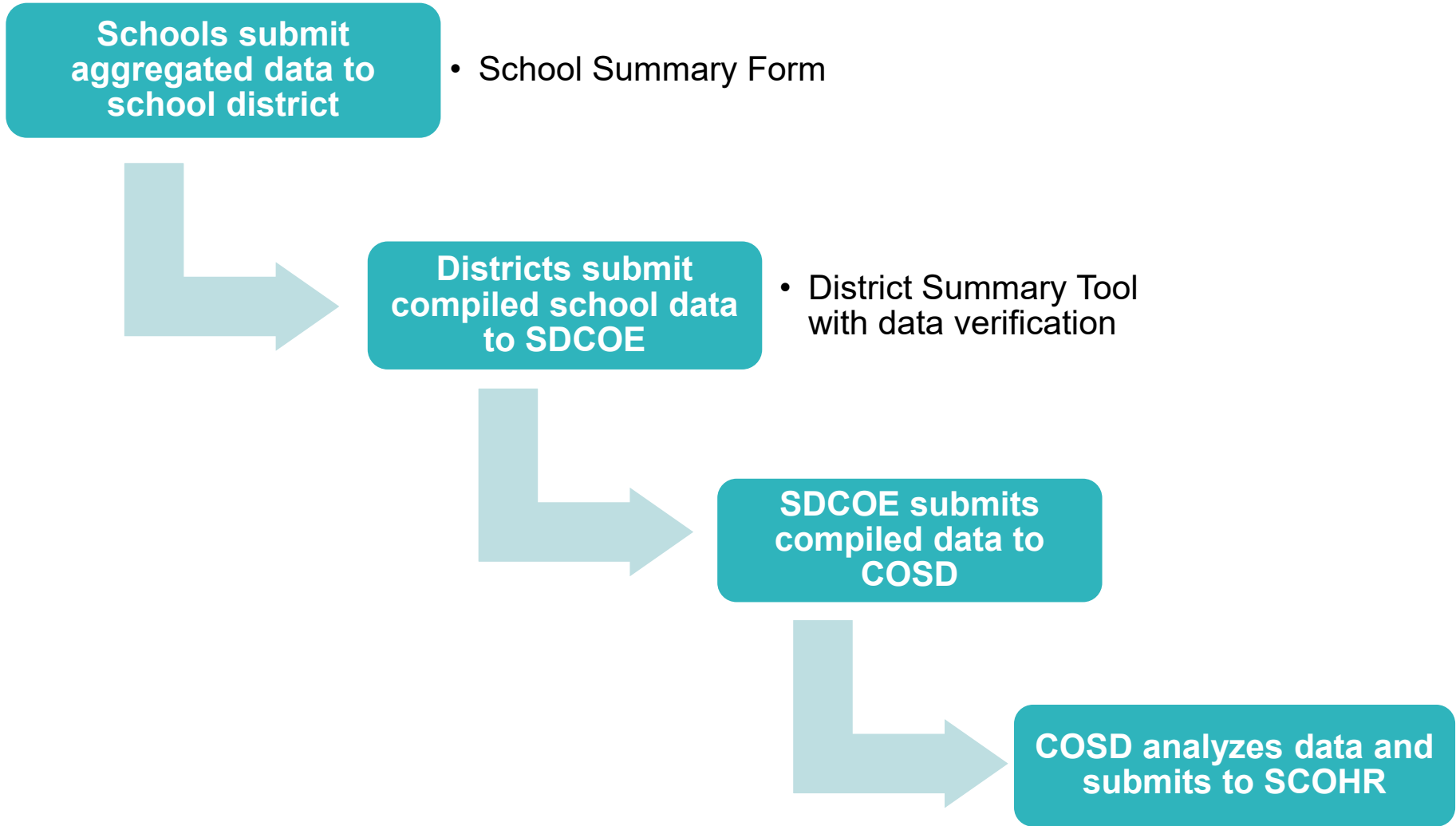
Winter

- Support schools and share resources
- Promote onsite screenings, oral health education and prevention, and referrals

Spring

- Data collection tools
- Technical assistance and trainings available

DATA SUBMISSION



DATA SUBMISSION – SCHOOL SUMMARY FORM



- For schools to report aggregated data
- Color coded to match District Summary Tool

Kindergarten Oral Health Assessment (KOHA) School Summary Tool

Complete and submit form to your district office by **June 15**.

<input type="text"/>	<input type="text"/>
School Name:	School Year:
<input type="text"/>	<input type="text"/>
Name of person completing form:	Phone number:
<input type="text"/>	
Email:	

Number of kindergarteners enrolled:	<input type="text"/>	Number of students who submitted a KOHA form: <i>(Include all collected forms with Section 2/ Assessment or Section 3/Waiver filled out)</i>	<input type="text"/>
Number of first graders enrolled: (if his/her first year in public school)	<input type="text"/>	Number of students who DID NOT submit a KOHA Form:	<input type="text"/>

From the collected KOHA forms, compile the total number of students who had an assessment and reported the following: (Section 2 of the KOHA Form)	
Yes for Caries Experience:	<input type="text"/>
Yes for Visible Decay Present:	<input type="text"/>
No Obvious Problem:	<input type="text"/>
Early Dental Care Recommended:	<input type="text"/>
Urgent Care Needed:	<input type="text"/>

From the collected KOHA forms, compile the total number of students who have a signed waiver and gave the following reasons: (Section 3 of the KOHA Form)	
Unable to find a dental office that will take my child's dental insurance:	<input type="text"/>
I cannot afford a dental check-up for my child:	<input type="text"/>
I do not want my child to receive an oral health screening:	<input type="text"/>
Other reasons my child could not get an oral health screening:	<input type="text"/>
No reason provided:	<input type="text"/>

For questions, please contact your district office .

DATA SUBMISSION – DISTRICT SUMMARY TOOL (2020)



Kindergarten Oral Health Assessment (KOHA): District Summary Tool:

DISTRICT NAME: Pretend Unified School District

SCHOOL YEAR: 2018-19

STUDENT COUNT					SECTION 2/ASSESSMENT					SECTION 3/ WAIVER OF KOHA				
School Name	Number of kindergartners enrolled	Number of first graders (if his/her first year in public school)	Number of students who submitted a KOHA form	Number of students who DID NOT submit a KOHA form	Yes for Caries Experience	Yes for Visible Decay Present	No obvious problem found	Early Dental Care Recommended	Urgent Care Needed	Unable to find a dental office that will take insurance	Cannot afford an oral health screening	I do not want my child to receive an oral health screening	Other reasons child could not get an oral health screening	No Reason provided
Elementary A	38	2	36	4	5	8	26	4	4	0	0	2	0	0
Elementary B	28	5	30	3	6	5	20	3	2	0	0	3	0	2
Elementary C	50	0	48	2	12	7	35	5	2	2	0	2	0	2
Elementary D	29	1	30	0	4	5	22	3	2	0	0	0	3	0
TOTALS	145	8	144	9	27	25	103	15	10	2	0	7	3	4

DATA SUBMISSION – DISTRICT SUMMARY TOOL (2021)



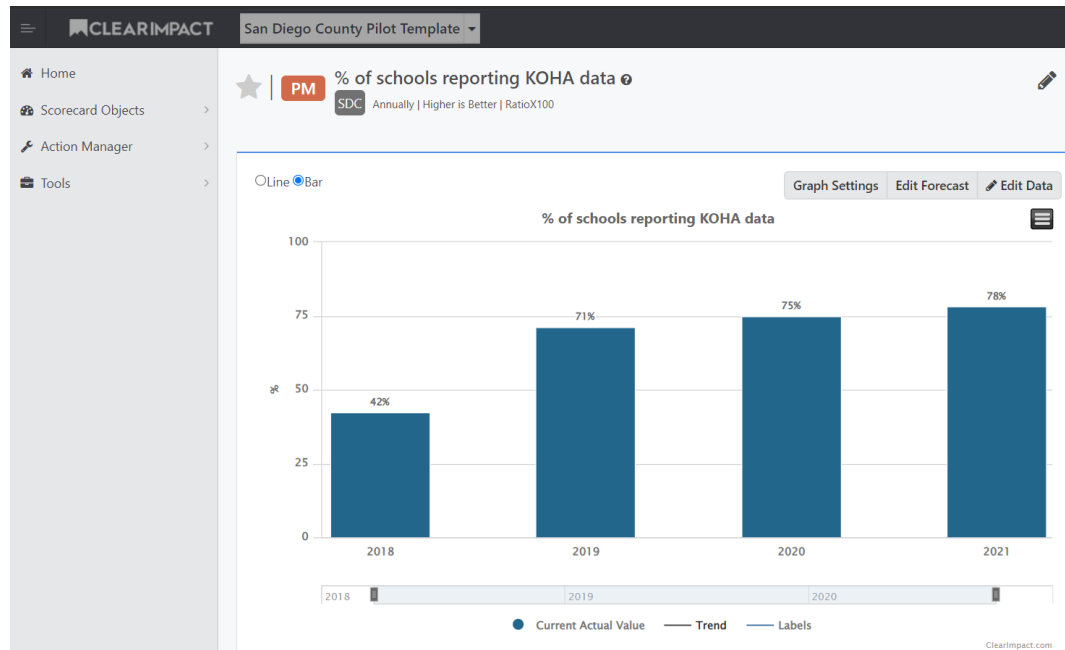
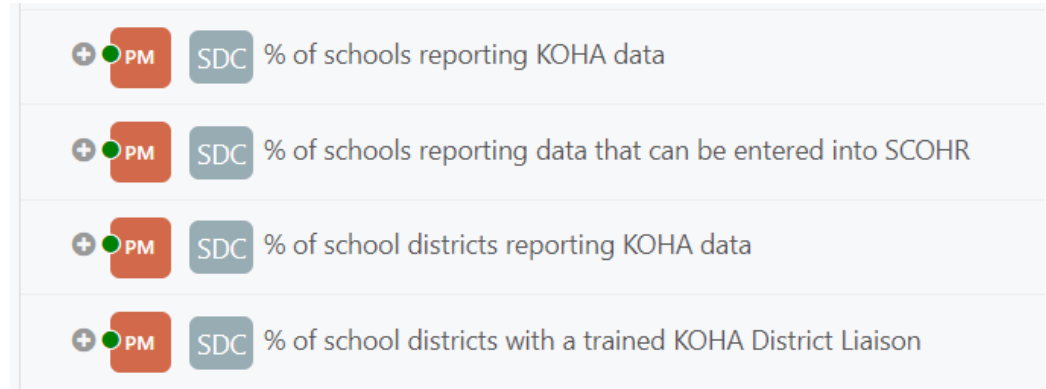
- Added tabs for Definitions and Summary Table
- Added columns to automatically check entered data for discrepancies
- Only added data entry field was for notes

DATA CHECKS						
Total enrolled kindergarteners and first year first graders	Total Number of students that did or did not submit a KOHA form	Total number of KOHA forms submitted with completed OHA data	Total number of KOHA forms submitted with waivers	Discrepancy between a) Total enrolled kindergarteners and first year first graders and b) Total number of students that did or did not submit a KOHA form	Discrepancy between c) The number of students who submitted a KOHA form and d) The sum of KOHA forms with completed OHA data and KOHA forms with waivers	Notes to describe discrepancies in school data
3	3	0	0	NO	NO	
26	48	24	2	YES	YES	
115	115	49	5	NO	YES	
98	98	37	7	NO	YES	
11	152	46	12	YES	YES	
83	83	13	2	NO	NO	

RESULTS BASED ACCOUNTABILITY



- Added metrics for KOHA outcomes, reporting, data quality, KOHA District Liaisons
- Placeholders for metrics on third grade screenings and health equity
- Develop “Story Behind the Curve”



WOES AND WINS



Changes and updates to forms

Schools using different forms

No training or support for school staff

Reports not particularly meaningful

Oral health not a current priority

Process inconsistent with SCOHR

Improved communication

KOHA District Liaisons

Data verification

Increased staff

Better understanding of KOHA reporting challenges



Collaboration

- Continue to use KOHA District Liaisons
- Support school efforts with parents

Data

- Continue to improve tools and resources for KOHA reporting
- Share useful data with partners and school administrators
- Use RBA to continue to guide the process

Oral Health Assessments

- Provide on site screenings with passive consent
- Provide referrals

CONTACT INFORMATION



Oral Health Programs

Family Health and Preventive Services Unit

Public Health Services – Maternal, Child, and Family Health Services Branch

County of San Diego

619-692-8858

Nancy Starr, RDH, MPH
Health Planning and Program Specialist
Cell: 619-780-1281

Nancy.Starr@sdcounty.ca.gov

Christy Lopez, MPH, CPH
Epidemiologist
Cell: 619-417-3309

Christy.Lopez@sdcounty.ca.gov

www.mcfhs.org



On May 17, 2016, the County of San Diego Health and Human Services Agency Division of Public Health Services received accreditation from the Public Health Accreditation Board.